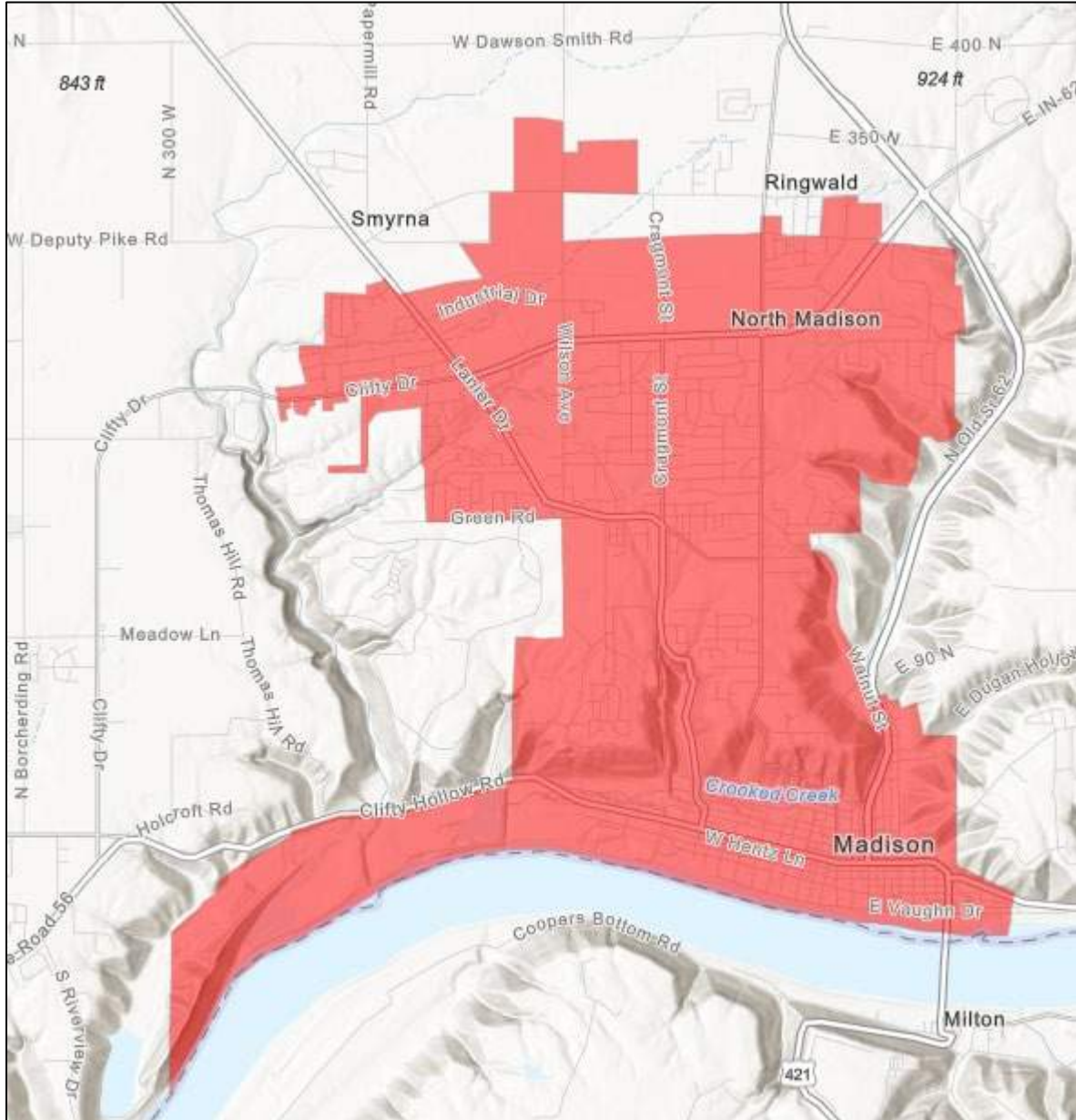


Attachment A. Map of Madison MS4 Boundary



Attachment B. City of Madison IN – City Hall Facebook Example Posts

www.facebook.com/cityofmadisonIN

 **City of Madison IN - City Hall**
December 10, 2021 · 🌐

With storms in the forecast for this weekend, we are asking residents to help keep our storm drains clear of leaves. If you have placed leaves on the curb, please push them away from the drains. If you see leaves blocking the drains over the weekend, please help our street department clear them. This will help keep roadways clear of standing water.

STORM IN THE FORECAST

The City of Madison is asking residents to help keep storm drains clear of leaves.

THIS WILL HELP PREVENT FLOODED ROADWAYS

 42

5 comments 31 shares



City of Madison IN - City Hall

July 27, 2022 · 🌐

...

Even on dreary days, the City of Madison Street Department braves the rain to get the job done. This morning, the street department was hard at work despite the downpour. These pictures show our men clearing storm drains, debris, and picking up garbage on Michigan Road.

Thank you, City of Madison Street Department, for making our city [#cleansafeandbeautiful](#) no matter the weather!



294

50 comments 9 shares



Southern Indiana Stormwater Advisory Committee (SWAC)

2022 MS4 Annual Report Activities Summary

Reporting Period: January through December 2022

Summary of the major MS4 activities and milestones accomplished by the Southern Indiana Stormwater Advisory Committee (SWAC) for January – December 2022. The SWAC has historically been composed of eight regulated MS4 communities.

Municipality	Population*
Clarksville	22,333
Floyd County	37,649
Jeffersonville	44,068
New Albany	37,841
Oak Park Conservancy District	5,379
Sellersburg	9,310
Madison	12,357
Georgetown	3,805
<i>Clark County**</i>	<i>10,000***</i>
Total Population Served	182,742

*Population data provided by 2020 Census

**Clark County was a member for the first five months of 2022.

***Estimated urbanized population.

Key Goals of the SWAC:

- Help implement the federally mandated Municipal Separate Storm Sewer System (MS4) program.
- Provide a platform for collaboration among member communities to work toward regional stormwater goals.
- Coordinate regional events, such as public meetings and community clean-ups, to both educate and involve the public.
- Efficiently implement the MS4 program by developing and sharing materials and resources, such as stormwater educational materials and resources for contractors, builders, businesses, residents and other constituents.
- Protect water resources through the development of consistent policies and reference materials and through sound environmental stewardship.

The SWAC is a partnership that does not wholly satisfy any community's permit. Rather, the SWAC is a platform for communication and collaboration, which has allowed member communities to better implement the MS4 program in a highly efficient manner to meet regulatory needs and serve the southern Indiana region.



MCM 1: Public Education and Outreach

1) SWAC Meetings:

The SWAC held quarterly meetings in 2022. The SWAC meetings cover information regarding new permit requirements, training opportunities, community updates, and annual report preparation assistance, among other topics. Meeting dates for 2022 are summarized in **Table 1 – SWAC Meetings**. Sign-in sheets for the meetings are included in **Appendix A1** and agendas for meetings are in **Appendix A2**.

Table 1. SWAC Meetings

Meeting Date	Number of Representatives Present
March 31	11
June 16	9
September 29	10
December 15	6

2) Publications/Advertisements:

a. Website: The SWAC maintains a website (www.SISWAC.org) and continually posts announcements about upcoming events, meeting schedules, and useful links. The SWAC also uses the website to make all the materials they've produced available for public use, such as brochures, guidebooks, and training manuals. GoogleAnalytics is used to track website usage, which more accurately gauges the page views, visitors, and number of users. The summary of the webpage usage for number of sessions, new site visitors, and pageviews is shown in **Table 2 – January – December 2022 Website Data**. The data indicates that a significant number of site visitors are new site visitors. The average number of pages per session is 1.58, indicating that more than half of users are exploring the site once they reach our website. See **Appendix B** for the summary output.

Table 2. January - December 2022 Website Data

Month	# of Sessions	# of Pageviews	% of New Site Visitors
January	84	124	92.6
February	56	75	98.2
March	73	122	94.5
April	472	828	90.6
May	844	1,401	73.3
June	1,727	2,571	59.0
July	68	117	90.8
August	84	124	92.1
September	103	177	87.7
October	76	130	93.0
November	99	151	90.7
December	74	118	93.1
Total	3,760	5,938	2,101



- b. Social Media – Facebook & Instagram: The SWAC maintains a Facebook page and Instagram account to increase their presence in social media, share ideas, and educate the public. As of December 2022, the page had 145 “Followers”, indicating a 6% drop in users since 2020, likely attributed to users leaving the social media platform. The Facebook page is a platform for messages about stormwater quality issues and ways in which the community can have a positive effect on stormwater, such as through picking up pet waste, reporting illegal dumping, and properly disposing of pollutants. It also reports events including SWAC Advisory Committee meetings, the MS4 Annual Meeting, and Stormwater Awareness Week events. SWAC members frequently “Share” the SWAC messages.

Posts made on Facebook, are also often shared on Instagram. Since the Instagram page was started in August 2019, under the handle swacstormwater, it has gained 144 Followers. A table showing all Facebook posts and examples of high-reaching posts can be seen in **Appendix C**.

- c. Update to Publications: In 2022, the SWAC updated information relating to the new MS4 General Permit, contact information, and made some visual improvements to the documents.
- d. All SWAC materials are available on the website. The full listing of publications the SWAC has made available to the community are:
- Brochures (17 total): Check dams, Concrete Washouts, Construction Entrances, Construction Sequencing, Construction Waste, Illicit Discharge, Individual Sites, Inlet Protection, Guide to the MS4 Program, Sediment Traps, Silt Fence, Stockpiling, SWAC Overview, Temporary Seeding and Mulching, Yard Waste and Grass Clippings, Desechos Ilícitos: Detección y Eliminación, Áreas de Construcción Individuales
 - Illicit Discharge Detection and Elimination Field Guide
 - IDDE Standard Operating Procedures (SOP)
 - Stream Visual Assessment Protocol (SVAP)
 - Drainage Detention Basin Guidebook
 - EPSC Shirt Pocket Field Guide
 - Municipal Employee Training Manual and PowerPoint Presentation
 - Municipal Stormwater Resource Handbook
 - Qualified Professional Inspector Program (QPI) – managed by Clark and Floyd County SWCDs

- 3) Stormwater Awareness Week: The SWAC hosted Stormwater Awareness Week throughout the region during the week of September 6th-10th, 2022. Social media messages were posted to the SWAC social media site to educate on reducing rain runoff, cleaning up spills, keeping grass clippings out of storm drains, etc. Activities were promoted on the SWAC website and through the Facebook page. Activities included putting out Stormwater Awareness signs, targeted educational brochures, discounts at local car washes, and River Sweeps. A list of activities in Floyd County can be found in **Appendix D**, as an example of activities performed throughout the region.



MCM 2: Public Involvement and Participation

- 1) SWAC Meetings: As mentioned in MCM1, the SWAC holds quarterly meetings. These meetings are open to the public and advertised. Meetings are typically moved throughout the region to encourage local involvement.
- 2) Community Clean-Up Activities: Household hazardous waste drop-offs and Drug Take Back programs were held in SWAC communities in 2022. The ORSANCO River Sweep program has converted to Mini Sweeps following 2020 pandemic, which consists of smaller groups of volunteers cleaning up the shores of the Ohio River. Multiple Mini-Sweeps were held in SWAC communities the past few years. Reports from ORSANCO for 2021 indicate that 150 Mini-Sweeps were held in 5 different states saw 1,500 people volunteering, and they collected 50,000 pound of litter. Participation in 2022 is likely even higher, although data is not yet available for last year.

MCM 3: Illicit Discharge Detection and Elimination

- 1) Field Guide: The SWAC previously developed an Illicit Discharge Detection and Elimination Quick Reference Field Guide which has been distributed to municipal employees over the course of the permit term to aide in identifying illicit discharges.
- 2) Stream Visual Assessment Protocol (SVAP): The SWAC developed a guidance document to perform a visual assessment of outfalls through their MS4 areas. The bi-annual visual assessment provides an opportunity to document changes at outfall locations and look for illicit discharges. The Stream Visual Assessment Protocol (SVAP) continues to be implemented in an ongoing manner throughout the SWAC communities. This program is used for on-going water quality characterizations. Because so many communities are contiguous, it is beneficial to evaluate receiving waters in a consistent manner.

MCM 4: Construction Site Runoff Management

- 1) The SWAC has developed a series of tri-fold brochures on construction site management (see MCM1 for a list), which includes two brochures with Spanish translations. These materials have been heavily relied upon by communities and the local SWCD inspectors. The materials are available on the SWAC's website for download and have been updated as-needed. Updates to some materials took place in 2022 to meet the new MS4 General Permit and Construction Stormwater General Permit.

MCM 5: Post-Construction Stormwater Management

- 1) SWAC communities have continued to use the Drainage Detention Systems Guidebook to help owners of retention and detention basins maintain basins in an ongoing manner. The resource contains information on both water quality and water quantity, with example pictures, community contact information, quick reference fact sheets for various detention/retention-based systems, and example forms for basin inspections. This document is available on the SWAC's website and has been provided to Homeowners Associations throughout the region.



MCM 6: Municipal Operations and Good Housekeeping

1) Municipal Training:

- a. The SWAC has developed a series of training materials regarding water quality for municipal employees. These materials provide simple “Do’s and Don’ts” that can be used at municipal facilities for site management or in the field while performing municipal services.
- b. The SWAC purchased a series of six (6) training videos from the North Central Texas Council of Governments (NCTCOG) on pollution prevention and good housekeeping. The videos have been made available to municipal employees and are available on the SWAC website on a password protected page.

General MS4 Activities by the SWAC

- 1) The SWAC actively participated in the 2022 Indiana MS4 Annual Conference on May 9th-10th. The SWAC set up a display table to showcase materials created by the group and disseminate information about the group to representatives throughout the state. Handout materials were provided, and members were available to discuss some of the efforts and challenges met by the group. Additionally, several members of the SWAC assisted with the afternoon work sessions regarding submittal requirements and documentation for new MS4s.

Materials handed out at the 2022 Conference include:

- Detention Basin Guidebook: 14
 - IDDE Field Guide: 24
 - Municipal Employee Training manuals: 28
 - EPSC Field Guide: 14
 - IDDE – Standard Operating Procedures: 14
 - Stream Visual Assessment Protocol (SVAP): 14
 - Environmental Handbook: 3
 - Brochures (17 topics): 217
- 2) Members of the SWAC attended the LTAP- Stormwater Drainage Conference in West Lafayette, February 9th - 10th, 2022, and the Indiana Association for Floodplain and Stormwater Management (INAFSM) Conference in South Bend, September 14-16. The focus in 2022 has been on the MS4 General Permit and Construction Stormwater General Permit. Information obtained at the conferences is shared during SWAC meetings.
 - 3) The SWAC Communities acknowledged the new permit by submitting a Notice of Intent (NOI) in May/June 2022 and focused on the transition to this permit throughout much of 2022. A new Stormwater Quality Management Plan (SWQMP) was developed and submitted by January 5, 2023, containing BMPs and activities intended to comply with the new MS4 General Permit. These activities will be implemented in 2023.

The SWAC is continually seeking to improve and expand in order to enhance the overall MS4 programs of the SWAC communities. We’re always looking for new ways to promote messages of stormwater quality throughout the region to improve the quality of our local streams, lakes, and waterways.



Appendix A1

SWAC Meeting Sign-in Sheets



ATTENDANCE SHEET



SWAC Meeting: Q1 2022

Location: OHM Advisors (400 Missouri Ave)

Date/Time: March 31st, 2022 1:30 - 3:00 pm

	NAME	COMMUNITY/ORGANIZATION
1	Matt Bell	City of Jeffersonville
2	Chris Moore	Floyd County
3	BART Meyer	Sellersburg
4	Phil Adams	City of New Albany
5	Brandon Felt	City of New Albany
6	BRIAN DIXON	CLARK County
7	TOM CLEVIDENCE	Clarksville
8	Sierra Tracy	OHM
9	Allison Padron	OHM
10	Dennis Kilgore	City of Madison - virtual
11	Rob Huckaby	OHM
12		
13		
14		
15		
16		
17		
18		
19		
20		
21		
22		
23		
24		

ATTENDANCE SHEET



SWAC Meeting: Q2 2022

Location: OHM Advisors (400 Missouri Ave)

Date/Time: June 16th, 2022 1:30 - 3:00 pm

	NAME	COMMUNITY/ORGANIZATION
1	Chris Moore	Floyd County
2	TOM CREVIDENCE	CLARKSVILLE
3	Allison Padron	OHM
4	Sierra Tracy	OHM
5	Rob Huckaby	OHM Advisors
6	Math Bell	City of Jeffersonville
7	Brandon Sailings	New Albany
8	BART Meyer	Sellersburg
9	BRIAN DIXON	CLARK Co.
10		
11		
12		
13		
14		
15		
16		
17		
18		
19		
20		
21		
22		
23		
24		

ATTENDANCE SHEET



SWAC Meeting: Q3 2022

Location: OHM Advisors (400 Missouri Ave)

Date/Time: Sept. 29th, 2022 1:30 - 3:00 pm

	NAME	COMMUNITY/ORGANIZATION
1	BRIAN JACKSON	MADISON
2	Jay Thompson	Madison
3	Matt Bell	Jeffersonville
4	TOM CREVIDENCE	CLARKSVILLE
5	DAVE Meyer	Sellersburg
6	Rob Huckaby	OHM Advisors
7	Allison Padron	OHM Advisors
8	Chris Moore	Floyd County
9	Philip Aldridge	New Albany
10	BRIAN DIXON	CLARK County
11	Rob Huckaby	
12		
13		
14		
15		
16		
17		
18		
19		
20		
21		
22		
23		
24		

ATTENDANCE SHEET



SWAC Meeting: Q4 2022

Location: Luncheon – Union Restaurant

Date/Time: December 15, 2022 12:00 - 1:30 pm

	NAME	COMMUNITY/ORGANIZATION
1	Rob Huckaby	OHM Advisors
2	Allison Padron	OHM Advisors
3	Tom Clevidence	Town of Clarksville
4	Matt Bell	City of Jeffersonville
5	Chris Moore	Floyd County
6	Bart Meyer	Town of Sellersburg
7		
8		
9		
10		
11		
12		
13		
14		
15		
16		
17		
18		
19		
20		
21		
22		
23		
24		

Appendix A2

SWAC Meeting Agendas





SWAC Meeting Agenda – Q1 2022
Thursday, March 31st, 2022, 1:30 - 3 pm
OHM Advisors Conference Room
400 Missouri Ave, Jeffersonville, IN 47130

1. Welcome/Community Updates
2. MS4 – NOIs:
 - a. Review data provided
 - b. Public Notices – Website (30 days) or Newspaper (1 day)
 - c. Obtain Signature of MS4 Operator – SCAN COPY FOR RECORDS
 - d. Submit to IDEM: mail paper copy with original signature and attachments
3. MS4 Permit Timeline – Upcoming Submittal Timeline

MS4 Permit Major Submittals	Submittal Timeline	Deadline to Submit
Notice of Intent (NOI)	Released March 22, 2022 – 90 days	June 20, 2022
Water Quality Characterization Report (WQCR)	With Annual Report	April 1, 2023
Stormwater Quality Management Plan (SWQMP)	180 days after NOI submitted	September 26, 2022
Ordinance and Tech Standards Updates	2 years	March 31, 2024
Annual Report (January 1 st to December 31 st)	Annual	April 1, 2023

4. Construction SW General Permit Updates
 - a. Continuation of Coverage – existing “Rule 5” permits must submit application
 - b. CSGP Plan Development Guidance & Plan Review template (sent to SWCDs)
5. QPI Training – Qualified Professional Inspector Program – Updates to program needed
6. Indiana MS4 Annual Meeting – May 9-10th – Cost \$105
 - a. Register @ <https://www.indianams4.org/>
 - b. SWAC will have a booth
 - c. Updating SWAC materials to reflect new permit
7. Newly Designated MS4s – Outreach Plan
8. MS4 Program Audits – Starting again April 2022
9. Reminder:
 - a. Find SMOP (or SWQMP); list of municipal facilities; employee training (all departments); mapping updates; outfall/dry-weather screening; educational poster in public space

Next Meeting - Suggested: May 19th, 2022



SWAC Meeting Agenda – Q2 2022
Thursday, June 16th, 2022, 1:30 - 3 pm
OHM Advisors Conference Room
400 Missouri Ave, Jeffersonville, IN 47130

1. Welcome/Community Updates
2. Follow up from Indiana MS4 Annual Meeting
3. Stormwater Awareness Week
 - a. ORSANCO – No single day event anymore – Full Season of Mini-Sweeps
 - b. Coordinate day of Mini-Sweeps for SWAC Communities?
4. MS4 Permit Timeline – Upcoming Submittal Timeline

MS4 Permit Major Submittals	Submittal Timeline	Deadline to Submit*
<i>Stormwater Quality Management Plan (SWQMP)</i>	180 days after NOI submitted	<i>October 23, 2022</i>
Annual Report (January 1 st to December 31 st)	Annually	April 1, 2023
Water Quality Characterization Report (WQCR)	With Annual Report	April 1, 2023
Ordinance and Tech Standards Updates	2 years	April 25, 2024

**Based on earliest known date of SWAC NOI mailed to IDEM. Will vary slightly based on community.*

5. SWQMP
 - a. Format – what works best for you?
 - b. Tables as Starting Point
 - c. Narrative vs Separate Sheets
 - d. Paper vs Digital
6. QPI Training – Qualified Professional Inspector Program
 - a. Updates to program to begin soon
 - b. SWCD correspondence
7. Upcoming Events/Reminders:
 - a. 2022 INAFSM Annual Conference Sept. 14th – 16th
 - b. MS4 Program Audits – Started again April 2022
 - c. Find SMOP (or SWQMP); list of municipal facilities; employee training (all departments); mapping updates; outfall/dry-weather screening; educational poster in public space



Next Meeting - Suggested: September 22nd



SWAC Meeting Agenda – Q3 2022

Thursday, September 29th, 2022, 1:30 - 3 pm

**OHM Advisors Conference Room
400 Missouri Ave, Jeffersonville, IN 47130**

1. Welcome/Community Updates
 - a. SWAC website hosting renewed in September for another year
 - b. IDEM news: Randy Braun – Stormwater Section Chief, Jay Turner – Wetlands Section Chief
2. Follow up from INAFSM Conference
3. SWQMP
4. QPI Program Updates
5. MS4 Permit Timeline – Upcoming Submittal Timeline

MS4 Permit Major Submittals	Submittal Timeline	Dates to Submit*
<i>Stormwater Quality Management Plan (SWQMP)</i>	180 days after NOI submitted	<i>End of October - November</i>
Annual Report (January 1 st to December 31 st)	Annually	April 1, 2023
Water Quality Characterization Report (WQCR)	With Annual Report	April 1, 2023
Ordinance and Tech Standards Updates	2 years	April 25, 2024

**Based on earliest known date of SWAC NOI mailed to IDEM. We don't have confirmation on actual date it was received by IDEM. Latest date is January 1st, 2023 based on final deadline for NOI. Will vary based on community.*

6. Newly Designated MS4 Neighbors
 - a. Harrison County
 - b. Dearborn County, Aurora, Greendale, Lawrenceburg
7. Upcoming Events/Reminders:
 - a. Indiana MS4 Annual Meeting – May 15-16th, 2023 in Plainfield, IN – registration opens Dec.
 - b. MS4 Program Audits – Started again April 2022
 - c. Find SMOP (or SWQMP); list of municipal facilities; employee training (all departments); mapping updates; outfall/dry-weather screening; educational poster in public space

Next Meeting - Suggested: December 15th



Appendix B

SWAC Website Analytics

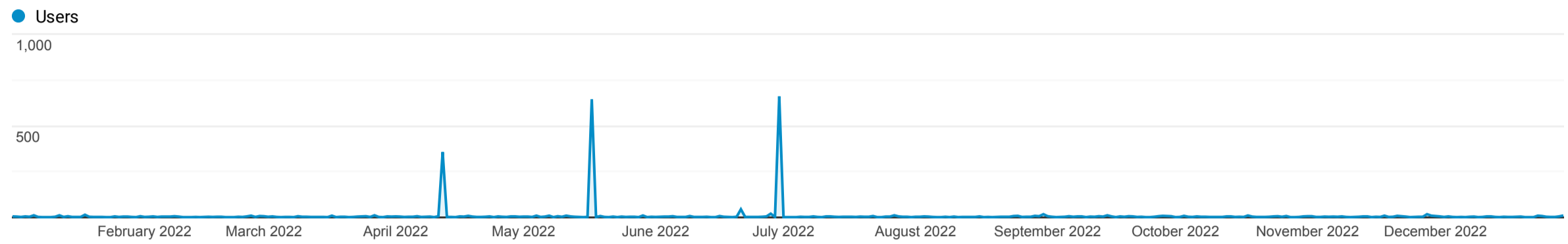


Audience Overview

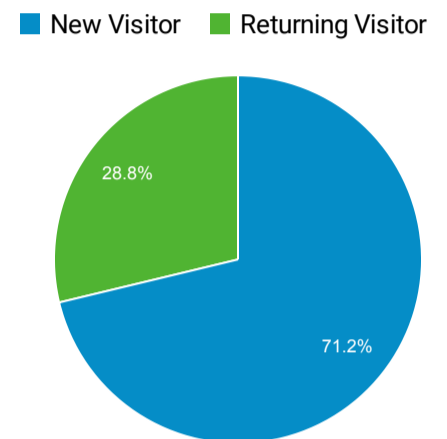
Jan 1, 2022 - Dec 31, 2022

All Users
100.00% Users

Overview



Users 2,103	New Users 2,101	Sessions 3,760	Number of Sessions per User 1.79
Pageviews 5,938	Pages / Session 1.58	Avg. Session Duration 00:00:48	Bounce Rate 51.99%



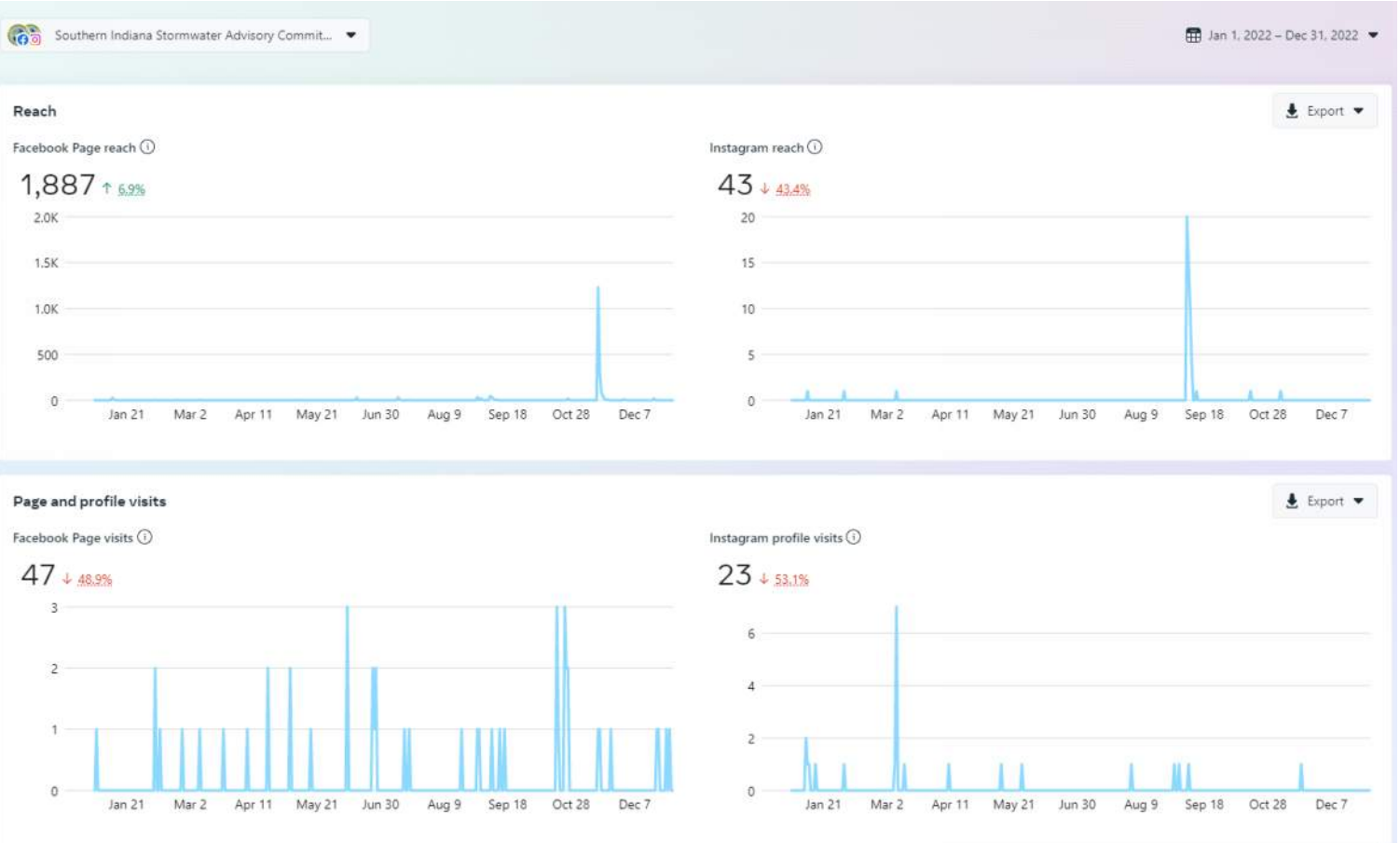
Language	Users	% Users
1. en-us	1,158	55.06%
2. en-gb	278	13.22%
3. zh-cn	163	7.75%
4. en-us@posix	48	2.28%
5. fr-fr	34	1.62%
6. es-es	28	1.33%
7. id	26	1.24%
8. de-de	25	1.19%
9. de	24	1.14%
10. fr	24	1.14%

Appendix C


SWAC Social Media Summary









SWAC Facebook and Instagram Page Summary for 2022



All content

Recent content 	Type	Reach  	Likes and reactio...  
 The Indiana Department of Environ... Jan 12, 2022	Post	Boost post	47 2
 Stop by and pick up some material... May 10, 2022	Post	Boost post	13 0
 Catch basins are for rain - not gras... Jun 15, 2022	Post	Boost post	38 1
 Clear The Drain. If the drains aroun... Jul 11, 2022	Post	Boost unavailable	39 0
 Southern Indiana Stormwater Advis... Aug 30, 2022		Create ad	-- 0
 Volunteer at the 2022 Ohio River S... Sep 1, 2022	Post	Boost post	41 1
 Soak in the Rain - reduce runoff fro... Sep 7, 2022	Post	Boost post	62 1
 Soak in the Rain - reduce runoff fro... Sep 7, 2022	Post		30 3
 Only Rain Down the Drain - Clean ... Sep 8, 2022	Post	Boost post	59 6
 Only Rain Down the Drain - Clean ... Sep 8, 2022	Post		17 1

	Join us tomorrow, Sept 10th, 9 am ... Sep 9, 2022	Post	Boost post	25	0
	Join us tomorrow, Sept 10th, 9 am ... Sep 9, 2022	Post		15	0
	Floyd County's Prescription Drug T... Oct 26, 2022	Post	Boost post	22	0
	Happy Thanksgiving! Nov 30, 2022	Post	Boost post	14	0
	Contractors, Developers, and Engin... Nov 30, 2022	Post	Boost post	18	1
	Deck the Halls and Clean those Sto... Dec 19, 2022	Post	Boost unavailable	32	0

Appendix D

Stormwater Awareness Week



Floyd County Stormwater Awareness Week

September 6th thru September 10, 2022

Tuesday, September 6, 2022

1. Put Stormwater Awareness signs in public (Parks) locations

Thursday, September 8, 2022

1. Canvass the county with Stormwater Education Brochures (targeted subdivisions)

Friday, September 9, 2022

1. Stormwater Awareness Day at the Car Wash. Go to any Jacobi Gas Station in Floyd County will receive \$1.00 off any Car Wash.

(Partnership with Jacobi's Gas Station and Floyd County Stormwater Department.)

Saturday, September 10, 2022

1. ORSANCO 2022 Ohio River Sweep New Albany Amphitheater. 9a.m. until Noon

(Partnership with the City of New Albany and (SWAC) Southern Indiana Stormwater Advisory Committee)



Text Size: [A](#) [A](#) [A](#)

[My Account](#)

[Locations & Hours](#)

[Events](#)



Jefferson County Public Library

[Madison Catalog](#)

[Hanover Catalog](#)

[Website](#)

Q Search for items at the Madison Library

SEARCH

[Advanced Search](#) | [Browse the Madison Catalog](#)

Programs & Services > *Water/Ways*



Tutorials



Water/Ways: Smithsonian Touring Exhibit

January 8, 2022 - February 20, 2022

Hosted by Jefferson County Public Library

Dive into water—an essential component of life on our planet, environmentally, culturally, and historically

Jefferson County Public Library has been chosen by Indiana Humanities as one of six Indiana communities to host *Water/Ways*, an exhibit created by the Smithsonian Institution that highlights the role that water plays in society, how it affects communities, and what can be done to improve the treatment of it. It is suitable for all ages. Attractions and events will also take place alongside the exhibition. The exhibit will open January 8, 2022 and will run until February 20, 2022. The exhibit will be open during normal library hours, as well as Sundays and Martin Luther King, Jr. Day from 12:00 pm to 4:00 pm. Free. Experience fun activities and dynamic programming in conjunction with this national exhibit. Enter through the automatic doors of the Auditorium of the Library seven days a week.

Water/Ways presents:

- *Water/Ways* Grand Opening, Reception, and Open House (Jan 8, 2022)

Questions? [Email a Librarian](#)

- Art Show (Jan 8-Feb 20, 2022)
- Jefferson County Historical Society Local Water Artifacts & Memorabilia Exhibit (Jan 8-Feb 20, 2022)
- Afterhours Film ~ Madison, Miss Madison & Hydroplane History (Jan 11, 2022)
- Water Wonders ~ Explore with Water (Jan 15, 2022)
- Water Wonders ~ Build-A-Boat (Jan 22, 2022)
- Water Resources of Jefferson County; A Geologist's Perspective (Jan 25, 2022)
- Crossing Barriers: Uncovering the Amazing Carter Family (Feb 1, 2022)
- Water Wonders ~ Build-A-Bridge (Feb 5, 2022)
- The Underground Railroad in Jefferson County, Indiana: An Interracial Partnership Ahead of Its Time (Feb 8, 2022)
- Explore the Underground Railroad (Feb 12, 2022)
- 1619 Project (Feb 24, 2022)

Check the [JCPL Events Calendar](#) for program details and updates.

Press Releases

- [Water/Ways Site Selection Press Release](#)
- [Water/Ways Volunteer Press Release](#)
- [Call for Art Press Release](#)
- [Water/Ways Grand Opening, Reception, and Open House Press Release](#)
- [Water/Ways Water Resources of Jefferson County Press Release](#)
- [Water/Ways Art Show Winners Press Release](#)

Books & Media

[My Account](#)
[Library Catalog](#)
[Get a Library Card](#)
[Borrowing](#)
[Digital Media](#)
[Hoopla](#)
[Overdrive](#)
[JCPL Academy Tutorials](#)
[Interlibrary Loan](#)
[Recommended Reading](#)
[Request Materials](#)
[Wowbrary Newsletter](#)

Local History

[Genealogy](#)
[Local Author Shelf](#)
[Local History](#)
[Ancestry.com](#)
[Heritage Quest](#)

Research

[Research Databases](#)
[Ancestry.com](#)
[Book Connections](#)
[ChiltonLibrary](#)
[Gale LegalForms](#)
[Heritage Quest](#)
[INSPIRE: Indiana's Virtual Library](#)
[Novelist: What should I read next?](#)
[Reference Solutions](#)
[World Book Online](#)

About

[About the Library](#)
[History of the Library](#)
[Long Range Plan](#)
[Evergreen Indiana](#)
[Locations & Hours](#)
[Library Policies](#)
[Contact the Library](#)
[Budget Notices & Gateway Dashboard](#)

Programs & Services

[Events](#)
[Computers & Wi-Fi](#)
[Wireless Printing](#)
[Meeting Spaces](#)
[Children's Department](#)
[Teen Department](#)
[Outreach Services](#)
[Seed Library](#)

Get Involved

[Support the Library](#)
[Donate](#)
[Give to the Endowment](#)
[Honor & Memorial Gifts](#)
[Job Opportunities](#)
[Friends of the Library](#)
[Board of Trustees](#)



Madison Library

Hours:
 Mon-Fri: 10a - 7p
 Sat: 10a - 4p
 Sun: Closed

Phone: [812-265-2744](tel:812-265-2744)
Email: contact@mjcp.org
Address:
 420 West Main Street
 Madison, IN 47250

Hanover Branch

Hours:
 Mon-Fri: 10a - 5:30p
 Sat-Sun: Closed

Phone: [812-866-1470](tel:812-866-1470)
Email: contact@mjcp.org
Address:
 273 North Madison Avenue
 Hanover, IN 47243

Plan Review Information

- The technical review and comment is intended to evaluate the completeness of the Construction/Stormwater Pollution Prevention Plan for the project. The Plan submitted was not reviewed for the adequacy of engineering design. All measures included in the plan, as well as those recommended in the comments should be evaluated as to their feasibility by a qualified individual with structural measures designed by a qualified engineer. The Plan has not been reviewed for other local, state, or federal permits that may be required to proceed with this project.
- Additional information, including design calculations may be requested to further evaluate the plan.
- All proposed stormwater pollution prevention measures and those referenced in this review must meet the design criteria and standards set forth in the "Indiana Stormwater Quality Manual" from the Indiana Department of Environmental Management or similar Guidance Documents.
- Construction activities and unforeseen weather conditions may affect the performance of the erosion and sediment control system, individual measures, or the effectiveness of the plan. The plan must be a flexible document, with provisions to modify or substitute measures as necessary to ensure compliance.

Section A: Construction Plan Elements

Adequate	Deficient	NA	A	
<p>The construction plan elements include general information associated with the project site that are critical for the evaluation of the stormwater pollution prevention plan component. This information includes, but is not limited to an index, resource information, reference maps, grading information, project layout and design, and drainage plan</p>				
<input type="checkbox"/>	<input type="checkbox"/>	<input type="checkbox"/>	1	Index of the location of required plan elements in the construction plan
<input type="checkbox"/>	<input type="checkbox"/>	<input type="checkbox"/>	2	A vicinity map depicting the project site location in relationship to recognizable local landmarks, towns, and major roads
<input type="checkbox"/>	<input type="checkbox"/>	<input type="checkbox"/>	3	Narrative of the nature and purpose of the project
<input type="checkbox"/>	<input type="checkbox"/>	<input type="checkbox"/>	4	Latitude and longitude to the nearest fifteen (15) seconds
<input type="checkbox"/>	<input type="checkbox"/>	<input type="checkbox"/>	5	Legal description of the project site
<input type="checkbox"/>	<input type="checkbox"/>	<input type="checkbox"/>	6	11 X 17-inch plat showing building lot numbers/boundaries and road layout/names
<input type="checkbox"/>	<input type="checkbox"/>	<input type="checkbox"/>	7	Boundaries of the one hundred (100) year floodplains, floodway fringes, and floodways
<input type="checkbox"/>	<input type="checkbox"/>	<input type="checkbox"/>	8	Land use of all adjacent properties
<input type="checkbox"/>	<input type="checkbox"/>	<input type="checkbox"/>	9	Identification of a U.S. EPA approved or established TMDL
<input type="checkbox"/>	<input type="checkbox"/>	<input type="checkbox"/>	10	Name(s) of the receiving water(s)
<input type="checkbox"/>	<input type="checkbox"/>	<input type="checkbox"/>	11	Identification of discharges to a water on the current 303d list of impaired waters and the pollutant(s) for which it is impaired
<input type="checkbox"/>	<input type="checkbox"/>	<input type="checkbox"/>	12	Soil map of the predominant soil types
<input type="checkbox"/>	<input type="checkbox"/>	<input type="checkbox"/>	13	Identification and location of all known wetlands, lakes and water courses on or adjacent to the project site (construction plan, existing site layout,)
<input type="checkbox"/>	<input type="checkbox"/>	<input type="checkbox"/>	14	Identification of any other state or federal water quality permits or authorizations that are required for construction activities
<input type="checkbox"/>	<input type="checkbox"/>	<input type="checkbox"/>	15	Identification and delineation of existing cover, including natural buffers
<input type="checkbox"/>	<input type="checkbox"/>	<input type="checkbox"/>	16	Existing topography at a contour interval appropriate to indicate drainage patterns
<input type="checkbox"/>	<input type="checkbox"/>	<input type="checkbox"/>	17	Location(s) of where run-off enters the project site
<input type="checkbox"/>	<input type="checkbox"/>	<input type="checkbox"/>	18	Location(s) of where run-off discharges from the project site prior to land disturbance
<input type="checkbox"/>	<input type="checkbox"/>	<input type="checkbox"/>	19	Location of all existing structures on the project site
<input type="checkbox"/>	<input type="checkbox"/>	<input type="checkbox"/>	20	Existing permanent retention or detention facilities, including manmade wetlands, designed for the purpose of stormwater management
<input type="checkbox"/>	<input type="checkbox"/>	<input type="checkbox"/>	21	Locations where stormwater may be directly discharged into ground water, such as abandoned wells, sinkholes, or karst features
<input type="checkbox"/>	<input type="checkbox"/>	<input type="checkbox"/>	22	Size of the project area expressed in acres

Adequate	Deficient	NA	A	
				<i>The construction plan elements include general information associated with the project site that are critical for the evaluation of the stormwater pollution prevention plan component. This information includes, but is not limited to an index, resource information, reference maps, grading information, project layout and design, and drainage plan</i>
<input type="checkbox"/>	<input type="checkbox"/>	<input type="checkbox"/>	23	Total expected land disturbance expressed in acres
<input type="checkbox"/>	<input type="checkbox"/>	<input type="checkbox"/>	24	Proposed final topography
<input type="checkbox"/>	<input type="checkbox"/>	<input type="checkbox"/>	25	Locations and approximate boundaries of all disturbed areas
<input type="checkbox"/>	<input type="checkbox"/>	<input type="checkbox"/>	26	Location, size, and dimensions of all stormwater drainage systems, such as culverts, storm sewers, and conveyance channels
<input type="checkbox"/>	<input type="checkbox"/>	<input type="checkbox"/>	27	Locations of specific points where stormwater and non-stormwater discharges will leave the project site
<input type="checkbox"/>	<input type="checkbox"/>	<input type="checkbox"/>	28	Location of all proposed site improvements, including roads, utilities, lot delineation and identification, proposed structures, and common areas
<input type="checkbox"/>	<input type="checkbox"/>	<input type="checkbox"/>	29	Location of all on-site soil stockpiles and borrow areas
<input type="checkbox"/>	<input type="checkbox"/>	<input type="checkbox"/>	30	Construction support activities that are expected to be part of the project
<input type="checkbox"/>	<input type="checkbox"/>	<input type="checkbox"/>	31	Location of any in-stream activities that are planned for the project including, but not limited to stream crossings and pump arounds
Section A – Comments:				
<ul style="list-style-type: none"> Evaluate areas with potential waters of the state and, where required, verify if permits/authorizations are required prior to any impacts to waters of the state. These potential resources include areas with hydric soil, hydrophytic vegetation, pooling water, or evidence of flowing water such as swales, ditches, drains, or natural conveyances. Evaluation of hydric soil, hydrophytic vegetation, or pooling water should conform to the US Army Corps of Engineers Wetlands Delineation Manual," Technical Report Y-87-1, and the applicable regional supplement https://www.usace.army.mil/Missions/Civil-Works/Regulatory-Program-and-Permits/reg_supp/. Avoidance and minimization of impacts to waters of the state should be prioritized. 				

Section B: Stormwater Pollution Prevention Plan – Erosion and Sediment Control/Project Site Management

Adequate	Deficient	NA	B	
				<i>The construction component of the Stormwater Pollution Prevention Plan includes stormwater quality measures to address erosion, sedimentation, and other pollutants associated with land disturbance and construction activities. Proper implementation of the plan, maintenance of measures, and administering a self-monitoring program is required to manage the project site to minimize the discharge of sediment and other pollutants. Construction activities and unforeseen weather conditions may affect the performance of the erosion and sediment control system, individual measures, or the effectiveness of the plan. The plan must be a flexible document, with provisions to modify or substitute measures as necessary to ensure compliance.</i>
<input type="checkbox"/>	<input type="checkbox"/>	<input type="checkbox"/>	1	Description of the potential pollutant generating sources and pollutants, including all potential non-stormwater discharges
Where applicable, Items in 2 through 10 below will be evaluated for Location, dimensions, detailed specifications, and construction details				
<input type="checkbox"/>	<input type="checkbox"/>	<input type="checkbox"/>	2	Stable construction entrance locations and specifications
<input type="checkbox"/>	<input type="checkbox"/>	<input type="checkbox"/>	3	Specifications for temporary and permanent stabilization
<input type="checkbox"/>	<input type="checkbox"/>	<input type="checkbox"/>	4	Sediment control measures for concentrated flow areas
<input type="checkbox"/>	<input type="checkbox"/>	<input type="checkbox"/>	5	Sediment control measures for sheet flow areas
<input type="checkbox"/>	<input type="checkbox"/>	<input type="checkbox"/>	6	Run-off control measures
<input type="checkbox"/>	<input type="checkbox"/>	<input type="checkbox"/>	7	Stormwater outlet protection locations and specifications
<input type="checkbox"/>	<input type="checkbox"/>	<input type="checkbox"/>	8	Grade stabilization structure locations and specifications
<input type="checkbox"/>	<input type="checkbox"/>	<input type="checkbox"/>	9	Dewatering applications and management methods
<input type="checkbox"/>	<input type="checkbox"/>	<input type="checkbox"/>	10	Measures utilized for work within waterbodies
<input type="checkbox"/>	<input type="checkbox"/>	<input type="checkbox"/>	11	Maintenance guidelines for each proposed temporary stormwater quality measure
<input type="checkbox"/>	<input type="checkbox"/>	<input type="checkbox"/>	12	Planned construction sequence describing the relationship between implementation of stormwater quality measures in relation to land disturbance
<input type="checkbox"/>	<input type="checkbox"/>	<input type="checkbox"/>	13	Provisions for erosion and sediment control on individual building lots regulated under the proposed project
<input type="checkbox"/>	<input type="checkbox"/>	<input type="checkbox"/>	14	Material handling and spill prevention and spill response plan meeting the requirements in 327 IAC 2-6.1
<input type="checkbox"/>	<input type="checkbox"/>	<input type="checkbox"/>	15	Material handling and storage procedures associated with construction activity

Section B – Comments:

- Stormwater quality measures for the reduction of sediment have not been evaluated for adequacy of design. The proposed measures included in this SWP3 are being accepted based on the design engineer’s submittal.
-

Section C: Stormwater Pollution Prevention Plan – Post-Construction

Adequate	Deficient	NA	C	
				<i>The post-construction component of the Stormwater Pollution Prevention Plan includes the implementation of stormwater quality measures to address pollutants that will be associated with the final project land use. Post-construction stormwater measures should be functional upon completion of the project. Long term functionality of the measures is critical to their performance and should be monitored and maintained.</i>
<input type="checkbox"/>	<input type="checkbox"/>	<input type="checkbox"/>	1	Description of pollutants and their sources associated with the proposed land use
<input type="checkbox"/>	<input type="checkbox"/>	<input type="checkbox"/>	2	Description of proposed post-construction stormwater measures
<input type="checkbox"/>	<input type="checkbox"/>	<input type="checkbox"/>	3	Plan details for each stormwater measure
<input type="checkbox"/>	<input type="checkbox"/>	<input type="checkbox"/>	4	Sequence describing stormwater measure implementation
<input type="checkbox"/>	<input type="checkbox"/>	<input type="checkbox"/>	5	Maintenance guidelines for proposed post-construction stormwater measures
<input type="checkbox"/>	<input type="checkbox"/>	<input type="checkbox"/>	6	Entity that will be responsible for operation and maintenance of the post-construction stormwater measures

Section C – Comments:

- Post-construction stormwater quality and quantity measures have not been evaluated for adequacy of design. The proposed measures included in this SWP3 are being accepted based on the design engineer’s submittal.
- The rate of stormwater run-off and/or volume from the project site must meet local requirements to address stormwater quantity as established by ordinance or other regulatory mechanism. When a local requirement does not exist, the post-development run-off discharge from the project site must not exceed the pre-development discharge based on the two-year, ten-year, and one-hundred-year peak storm events.
-

Attachment F - Letter About New CGSP sent to Contractors in January 2022

Date: January 14, 2022

Re: Updates to State Stormwater Permits – Construction Stormwater General Permit (CSGP)

As you may have heard, IDEM (Indiana Department of Environmental Management) has been going through the review process with the EPA to bring the State's stormwater permitting procedure into federal compliance. The state permit, commonly referred to as "Rule 5", was enacted through the Indiana administrative code (327 IAC 15-5) in the mid-2000's and has remained largely unchanged since.

As of 12-18-2021, the Construction Stormwater program is no longer administered through 327 IAC 15-5 and has been replaced with the new Construction Stormwater General Permit (CSGP).

Current "Rule 5" permits will either: (1) submit a Notice of Intent (NOI) for Continuation of Coverage within 90 days of the NOI being made available; or, (2) submit a Notice of Termination (NOT) with approval by the City of Madison MS4 Coordinator. If you submit the NOI for Continuation of Coverage, your permit effective dates will not change, and there will not be a new review of the project plans or the stormwater pollution prevention plan (SWPPP), but the project will be expected to comply with new procedural and performance standards, summarized below. The NOI has not been made available yet, but permit-holders can expect to hear from IDEM with more detailed guidance when it is released. **All projects with active NOIs will be required to take action.**

Important procedural updates to the permit:

- Any project with one (1) acre or more of land disturbance must obtain a CSGP, including single-family residential projects not part of a larger common plan of development or a multi-lot project.
- Individual lots that are part of a common plan of development will now develop a lot specific SWPPP and will complete a Residential Development Registration Form, certifying compliance with the developer's CSGP and the local MS4 ordinance.
- All CSGP applications, submittals, and correspondence will occur via IDEM's Regulatory ePortal, as required by EPA's electronic reporting rule.

Important performance standard changes to the permit:

- Self-monitoring inspections must occur at minimum once per week, AND by the end of the next business day following a rain event of one-half (0.5) inch or more, but no more than three inspections within a business week. An inspection 24-hours prior to a qualifying rain event is acceptable.
- Self-monitoring inspections will include a written evaluation of the project site, which will include a timeline that corrective action will occur. If corrective action cannot be completed, a reason and alternative timeline must be provided.

- Project management logs must contain:
 - Location of all off-site borrow sites, disposal locations, and staging areas.
 - Information and/or documents related to all project activities including, but not limited to self-monitoring reports, regulatory inspections, responses to compliance action, and SWPPP modifications.
- Stabilization must be initiated by the end of the seventh (7) day for those areas that are left idle, and complete stabilization within 14 days. Final stabilization standard remains at 70% density for permit termination.
- New projects will incorporate preservation of existing natural buffers adjacent to a water of the state, maintained at 50' where existing buffer is greater than 50' or maintained in its entirety where buffer is less than 50' in width.
- Waste containers/trash receptacles must be covered when not in use and at the end of the workday.
- All dewatering operations must be directed to an appropriate sediment control measure.

We recognize that some of these changes will take time to adjust to. We are all learning these new rules together, so we will be offering grace and flexibility over the next several months, but we do expect efforts to be made to meet these standards. Many of these are already things that you have been doing!

You can find more information and a copy of the new CSGP permit here:

<https://www.in.gov/idem/stormwater/construction-land-disturbance-permitting/>

You can access the Regulatory ePortal here: <https://stormwater.idem.in.gov/ncore/external/home>

Please reach out with questions at any point during this process. We are here as a resource for you and want to see your projects succeed!

Thank you,

James Hall

L&H Environmental for City of Madison MS4

jhall@l-henvironmental.com

812.599.9816 (c)

Attachment G - Example Detention Pond Inspection and Maintenance Plan

Detention Pond Inspection and Maintenance Plan

Between The City of Madison and Winterwood Development, LLC.

The City of Madison is currently the owner of 10.6160 acres that is more particularly described in the attached deed (Exhibit A). The City of Madison and Winterwood Development desire to enter into the following Detention Pond Inspection and Maintenance Plain. Said Plan shall become enforceable upon completion of the Detention Pond and purchase and sale of the property described in Exhibit A by Winterwood Development, LLC. For the purpose of this Maintenance Agreement, the parties will be referenced as follows: Winterwood Development, LLC (The Owner) and the City of Madison, Indiana (City).

Detention Pond Information

The dry detention pond located on the Property was constructed for the purpose of stormwater collection for an approximately 80-acre watershed that includes the development of the Sunrise Crossing Residences and Shoppes. The purpose of the pond is to provide flow control prior to discharge into Crooked Creek.

Inspection and Maintenance

The City will inspect the pond after every instance of precipitation that measures one-half inch (0.5") over any 24 hour period, and the City will perform the necessary maintenance as described below. At a minimum, the detention pond must be inspected by the City at least once per year.

The City will maintain the basin floor and side slopes. Grass will be kept by the City to a maximum of 12" in height.

The Owner will maintain the upper area around the pond to the slope (see attachment of LA plan noting area of Owner maintenance) [please define more clearly]. Grass will be kept by the Owner to a maximum of 6" in height. (See Exhibit B)

Inspection Schedule and Maintenance

The Owner will ensure there is a proper vegetative buffer around the perimeter and mow and weed control as necessary. The Owner has the right to cut additional areas, if approved in writing by the City, and perform other maintenance to improve the aesthetics of the development. Any additional maintenance performed by the Owner will be at their own expense.

The City will ensure there is at least 6 inches of vegetation on the side slopes and basin floor and will clean pond of debris and sediment negatively affecting storage capacity and clean downstream spillway.

Access and Use

The Owner agrees to provide site access to City personnel for the purposes of inspection, observation or testing. In the event the Owner fails to maintain the basin, the Owner agrees to provide site access to City personnel for maintenance, and repairs. The Owner agrees to allow the City to collect data, review records, collect samples and take photographs.

Indemnification

Other than claims or damages resulting from the negligence or willful misconduct of the City or the City's representative, Property Owner agrees to hold the City harmless from any claims that may arise as a result of the Owners maintenance of the basins described above.

Termination and Enforcement

The removal of, or failure to maintain the basins described above may subject the Property Owner to an enforcement action, which may include notices of violation, fines and cost recovery in the event that the City is required to maintain the basin. In the event of the occurrence of default, the City shall provide the Owner written notice (by certified, first class, or overnight mail) of default, setting forth the nature of the default, and the time period for the Owner to correct said default. If the Property Owner fails or refuses to correct said default within this time period, the City may institute enforcement procedures. The basin described above may only be removed and this agreement terminated if City written approval is given.

Successors and Assigns

This Agreement shall inure to the benefit of and shall be binding on the Parties hereto and their successors, grantees, and assigns. Upon written notice to the City, the Owner shall have the right to assign its interest in this Agreement to any affiliate.

Governing Law / Enforceability

This Agreement shall be governed by and construed in accordance with the laws of the State of Indiana. In the event any provision is determined to be invalid or unenforceable, the same shall not impair the validity or enforceability of the remainder of the Agreement.

Agreement Modification and Changes

Any modification or additions to this agreement must be agreed to by both parties.

Agreed to on this date: September 6, 2022

By:

Mike Hynes, President
Winterwood Development, LLC.

Bob Courtney, Mayor
City of Madison

**Street Sweeper
Collection Report 2021-2022**

DATE	Streets Cleaned	Weight	Initials	Mileage	Hours
4-25-22	Main St, Vaughan, Dr, 2 nd St, Baltimore, St, Jefferson, St Broadway, 1 st		HL	5	4
4-26-22	Mich. Hill, Hatcher, Hill, Cherry Dr, Crestwood, Cedarwood, Clifty Ct Bank St, Craigmont Ext, Craigmont, St		HL	8	4
4-27-22	Main St West End, Broadway, Elm, St, Vine, St, 3 rd St, Ross, St Blackmore, St, Hargin, St		HL	9	6
4-27-22	Hauled Load to TSO	4,300	HL		
4-28-22	Highland, Dr, Marshall, Pl, Hargin, St, Ross Pl, Blackmore, St, Ross St		HL	8	5
4-29-22	Main, St, State, St, Craigmont, St, Vaughn, Dr, Mouser, St, Hester, Hatcher, Hill, Hendrix		HL	9	6
5-2-22	Michigan Hill, State, St, Craigmont, St		HL	7	4
5-4-22	Clifty Dr from Mich, Rd to Clifty park Ent, State Hosp Ent.		BL	8	5
5-4-22	Hauled Load to TSO	13,100	HL		
5-5-22	Main, St - 2 nd St, Jefferson, St, Broadway, Vaughn, Dr, West, St, Elm St		HL	9	5
5-5-22	Vine St Mill, St		HL		
5-6-22	Mich. Rd and Mich. Hill, West, St + Fifth, St, Mulberry, St. Madison / Milton Bridge, Vaughn, Dr		HL	10	6
5-9-22	Main, St, Vaughan, Dr, Jefferson, St, Mulberry, St, West, St Elm St, Vine, St, Mill, St		HL	9	6
5-10-22	Michigan, Rd in front of Super ATV, Roundabout, Ivy Tech Dr	3,000	HL	8.5	6
5-11-22	Bellaire Dr, Crestwood, Cedarwood, Clifty, Ct, Bank, St - Blackmore, St Ross, St, Hargin, Dr, Marshall, Pl, Montclair, St, Mouser, St	4,000	HL	11	6
5-10-22	Hauled Load to TSO		HL		
5-16-22	Main, St, Jefferson, St, Vaughn, Dr, West, St, Mulberry, 5 th St		HL	7	4
5-17-22	Highland, St, Mouser, St, Montclair, St, Hester, Dr, Blackmore, St, Ross, St				
5-17-22	Hauled Load to TSO	2,500	BL		
5-23-22	Main, St, Vaughn, Dr, West, St, Mulberry, St, Jefferson, St		HL	9	5
5-24-22	Clift, Dr, Craigmont, St + Craigmont Ext, Micho Rd.				
5-25-22	Bal Pair, Cedarwood, St, Crestwood, Bank, St,				
5-26-22	Blackmore, St, Ross, St, Hargin,				
5-27-22	Hauled 4 loads to TSO to Golf Course.				
31-22	Main St, Vaughn, Dr, Parking Lot, West, St, Central and Parking Lot.				18/6

**Street Sweeper
Collection Report 2021- 2022**

DATE	Streets Cleaned	Weight	Initials	Mileage	Hours
3-9-22	Main, St. Vaughn, Dr, Mulberry St, Jefferson, Big Parking Lot		ML	8	6
3-10-22	West End of Main, St, 2 nd St, 3 rd St. East End, St Saint Michaels East St, 1 st Vaughn, Dr		ML	7	5
3-14-22	Mich. Hill Intersection, Clifty Dr from Mich. Rd to Clifty Park Ext N. Side, Craigmont, Ext		ML	5	5
3-15-22	Clifty Dr, South side, Bellaire, Dr, Crestwood, Bank, St. Cedarwood Clifty St, Ross, St, Mich. Rd		ML	7	5
3-16-22	Main, St. Madison / Milton Bridge, Vaughn, Dr 3 rd , 2 nd St		ML	6	4
3-21-22	Clifty Dr + Mich. Rd, Clifty, Dr + Craigmont. Craigmont Ext. Blackmore, St. Ross, St, Ross St		ML	8	5
3-24-22	Main, St, 2 nd St, 1 st St, Vaughn, Dr, East, St saint Michel. Walnut, St, Baltimore St		ML	7	4
3-25-22	Craigmont, St from Green, Rd to Craigmont, Ext. to Hutchinson Rd		ML	5.5	3
3-30-22	Wells Dr, Monroe, St, Rabbit Ln, Wolf Trails, Strader, St		ML	7	4
4-1-22	Main, St, Vaughn, Dr, 2 nd St, Jefferson, St, West, St, Mulberry, St		ML	8	4
4-4-22	Cherry, Dr, Ross, St, Blackmore, St, Hargin, Dr, Mantelair, St		ML	9	4.5
4-4-22	Mouser, St, Highland, Dr		ML	0	
4-4-22	Hauled load to TSO	3,500			
4-7-22	Round About, Ivy, Tech Dr, Mich. Hill, West, St, Fifth, St 4 th St West, St		ML	7	4
4-7-22	Hauled Load to TSO	7000			
4-8-22	Main, St, Vaughn, Dr, 2 nd St, Madison / Milton Bridge, 1 st		ML	8	4
4-14-22	Vaughn, Dr, 1 st , 2 nd St from East to West end,		ML	6.8	4
4-18-22	Mich. Rd, State, St, Hooten, Ave, Zukes Sport Complex Parking Lot		ML	5.8	4
4-19-22	Hauled Load to TSO	4700			
4-19-22	Hauled Load to TSO	15300			
4-20-22	Hauled Load to TSO	12,200			
4-20-22	Main, St, Vaughn, Dr, Saint Mich, Jefferson, St, Mulberry, West, St Central, Ave, Broadway		ML	7.5	4
4-21-22	Vaughn, Dr, Jefferson, St, Mulberry, St, West, St, Broadway, Vine, St, Mill, St Fifth, St, Elm, St, Walnut, St			6	4
4-22-22	Main, St, Vaughn, Dr, 2 nd St, Parking Lot, Madison / Milton Bridge			7	5

**Street Sweeper
Collection Report 2022**

DATE	Streets Cleaned	Weight	Initials	Mileage	Hours
6-1-22	Main St, Vaughn Dr - Craigmont Hill, Craigmont Ext.		AS	14	7
6-1-22	Hauled load to TSO	23,640	AS		
6-3-22	Clifty, Dr, Mich, Rd, Mich, Hill, 5 th St, West, St		AS	12	6
	Vaughn, Dr, Parking lot, Hatcher, Hill		AS	11	5
6-6-22	Beltair, Dr, Cedarwood, Dr, Crestwood, St, Bank, St, Clifty, St		AS	12	6
6-7-22	Main, St, Vaughn, Dr, Mill, St, Elm, St, Broadway, 2 nd , St		AS	7	4
6-8-22	Clifty, Dr, Craigmont Ext, Mich, Rd + Hill,		AS	9	5
6-9-22	Vaughn, Dr, Main, St, Mulberry, St, Jefferson, St, Saint Mich		AS	14	
6-10-22	US 421 Roundabout, Jefferson St, SR7-Craigmont St, Main, St		AS	12	5
6-10-22	US 421 - Harrison + Baltimore, St, Clifty, Dr, + Michigan, Rd				
6-13-22	Main, St, Vaughn, Dr, Jefferson, St, parking lot, Tiger Lily, Ln		AS	16	7
	Magnolia ave, Madriola, Ln, Orchid, St			12	5
6-17-22	Main, St, 3 rd St, Vaughn, Dr, Madison / Milton Bridge				
	Broadway, Jefferson, St, West, St, Mulberry, St 2 nd St			12	6
6-21-22	Main, St, Vaughn, Dr, Mill, St, Elm, St, Broadway, West, St				
	Mulberry, St, Jefferson, St,			11,600	AS
6-22-22	Hauled load to TSO				
6-23-22	Cherry, Dr, Ross, St, Blackmore, St, Hargin, St, Montclair, St		AS	11	6
6-23-22	Madison, St, Highland, Dr, Madison Craigmont, St,		AS	8	4
6-23-22	Michigan, Rd, Baltaire, Dr, Crestwood, Cedarwood, Dr, Bank, St		AS	1,600	AS
6-24-22	Hauled load to TSO				
6-24-22	Main, St, Vaughn, Dr, Mill, St, Elm, St, Broadway, St, West, St		AS	9	6
	Jefferson, St, Walnut Walnut, St,		AS	10	6
6-27-22	949 W. 2 nd St, Craigmont, St, Vaughn, Dr, Mich, Hill, State, St		AS	1,000	AS
6-27-22	Hauled load to TSO			1,800	AS
6-28-22	Hauled load to TSO				
6-28-22	Clifty, Dr, Craigmont Ext, Mich, Rd, Mich Hill, Vaughn, Dr		AS	10	6
7-7-22	Main, St, Jefferson, St, Vaughn, Dr, Broadway, Elm, St, Vine, St		AS	12	6.5
7-11-22	Mill, St, Saint Michaels, Walnut, St, 2 nd St, 1 st				
7-11-22	Main, St, Vaughn, Dr, 2 nd St, Jefferson, St, Helped Billy clean		AS	9	6
7-12-22	ditch out on Hatcher Hill				
7-12-22	Main, St, Vaughn, Dr, 1 st , 2 nd St, 3 rd Broadway, Freshman, 5 th St		AS	8	
7-13-22	Hauled load to TSO	14,400	AS		

Street Sweeper
Collection Report 2022

DATE	Streets Cleaned	Weight	Initials	Mileage	Hours
7-13-22	Clifty, Dr. Craigmont, Ext. Had to work on Sweeper		MS	6	4
7-17-22	Main, St., Vaughn, Dr. Jefferson St Mich. Hill, Clifty, Dr.		MS	8.5	7
7-15-22	Presbyterian, Broadway		MS	9	6
7-19-22	Main, St., Broadway, Vaughn, Dr., West, St. Central, Mulberry		MS	10	7
7-20-22	Jefferson, St. 2nd St 1st West End Worked on Sweeper,		MS		
7-20-22	Hauled Load to TSO / Dumped at TSO	3,400	MS		
7-20-22	Bellaire, Dr. Cedarwood, Crestwood, Bank, St. Clifty, Ct. Ross, St		MS		
8-1-22	Dumped at TSO	300	MS		
8-1-22	Main, St. Vaughn, Dr. 1st, 2nd St, 3rd St		MS	8	6
8-2-22	EAST 1st, 2nd St Mill St, Elm, St. Broadway, Central,		MS	12	7
8-5-22	West, St. Mulberry, St		MS		
8-5-22	Hauled Load to TSO	2000	MS		
8-5-22	Walt Trails, Wells, Dr, Magnolia, Tiger Lilly, Gladiola.		MS	10	6
8-8-22	Main, St, Vaughn, Dr. Broadway, West, St, Mulberry, St. East St		MS	11	6
8-8-22	Mich, Hill Walnut, St		MS		
8-9-22	Hauled Load of Grit to TSO	12200	MS		
8-11-22	Clifty, Dr Mich, Rd + Hill, Craigmont + Craigmont Ext.		MS	9	5
8-11-22	Hwy 7 Intersection.		MS		
8-11-22	Hauled Grit to TSO	11,400	MS		
8-12-22	Main, St, Vaughn, Dr. Mill, St. Mulberry, St. 1st + 2nd St		MS	7	6
8-15-22	Hauled Grit to TSO	1,000	MS		
8-15-22	Main, St, 2nd St, Central, 1st, Broadway, Parking Lot		MS	8	6
8-18-22	Main, St, Vaughn, Dr. 2nd Broadway, Jefferson, St.				
8-22-22	Madison / Milton Bridge.				
8-22-22	Hauled Grit to TSO	1400	MS		
8-22-22	Main, St, Vaughn, Dr. 1st, 2nd St, Elm, St, Vine, St		MS	9	5.5
8-23-22	Mill, St, Central, Parking Lot, West, St				
8-23-22	Michigan, Hill + Mich. Rd, Bank St, Clifty, Ct. Cedarwood, Dr				
8-23-22	Crestwood, Dr. Bellaire Dr Blackmore / St Ross, St. Cherry, Dr				
8-23-22	Hargin, Dr Marshall, Pl. Montclair, Mouser, St.		MS	12	7
8-24-22	Hauled Grit to TSO	2,500	MS		
8-24-22	Clifty, Dr. from Mich. Rd to Clifty park Ent. Madison / Milton		MS	11	6

R. Alon

**Street Sweeper
Collection Report 2022 22**

DATE	Streets Cleaned	Weight	Initials	Mileage	Hours
		500	MR		
8-29-22	Hauled Grit to TSO				
8-29-22	Main, St Vaughn, Dr, Elm, St Mill, St, Broadway, Central, Parking lot, West, St. Mulberry, St. Jefferson, St.		MR	8	6
8-31-22	Mich. Hill + Mich. Rd, Main, St, Vaughn, Dr. 2nd St. 3rd St. Broadway, 5th St. Jefferson, St		MR	9	6
9-1-22	Main, St.				
9-1-22	Bellaire, Cedarwood, Crestwood, Dr, Blackmore, St Ross, St Well, S, Dr + Manero, Dr. per Mike Cleaned Storm Drain		MR	8	5
9-2-22	Main, St, Vaughn, Dr, 2nd St, Madison / Milton Bridge, Mich, Rd + Mich. Hill	1000	MR		
9-6-22	Hauled Grit to TSO				
9-6-22	Main, St, Vaughn, Dr, 2nd St, West, St, Mulberry, St, Elm, St Vine, St, Mill, St, Parking lot,	2,500	MR	7	6
9-7-22	Hauled Grit to TSO				
9-7-22	9-7-22 Mich. Rd + Hill, Cragment + Cragment Ext, Main, St Jefferson, St, Broadway, 1st, 2nd		MR	10	6.5
9-9-22	Main, St, Vaughn, Dr, Mill, St, Elm, St, Broadway, Jefferson, St	1,000	MR	9	5
9-12-22	Hauled Grit to TSO				
9-12-22	Main, St, 2nd St, West, St, Mulberry, St, Saint Michaels, Vaughn, Dr Mich. Rd, Bellaire, St, Cedarwood, Dr, Crestwood, Dr.		MR	8	7
9-13-22	Clisty, Dr, Michigan, Rd, US 421 Harrison + Baltimore, St, SR 56 Main, St SR 7 Cragment, St, US 421 Jefferson, St		MR	12.60	7
9-15-22	Bellaire, Dr, Blackmore, St Hargin, Dr, Marshall, Al, Mantelair, St Broadway, Main, St, 5th St, Presbyteryn, 3rd St Elm, St.		MR	8	6
9-16-22	Vaughn, Dr, Alley behind Shipley's		MR	9	7
9-19-22	Main, St, Vaughn, Dr, 2nd, 1st, Vine, St, Elm, St, Broadway, Central Mulberry, St, Jefferson, St, Walnut, St, Saint Michaels		MR	10	7
9-20-22	Main, St, West End 1st, 2nd St, Vernon, St, Vaughn, Dr, Mill, St Vine, St, Elm, St, Broadway, St, Central, St, West, St, Mulberry, St Jefferson, St.		MR	7	4
9-23-22	Main, St all day, and Vaughn, Dr. Due to stripping		MR	7	7
9-26-22	Main, St, Jefferson, St, Walnut, Mulberry, West, St Vaughn, Dr	500	MR	7	6
9-27-22	9-27-22 Hauled Grit to TSO				

Attachment I - Examples of Culvert/Storm Drain Cleaning/Inspection Logs

9138

Name: Dusty Miller

City of Madison

Date: 2/16/22

Culvert/Storm Drain Status

Date	Name	Location	Cleaned (Y/N)	Directions of Flow (N, S, E, W)	Needs Repair	Comments
2/16/22	Dusty Miller	Walnut 9237926	Y			
		MAIN + MULBERRY	Y			
		N " " + WEST	Y			
		BROADWAY + MAIN	Y			
		MAIN + VINE	Y			
		" " + MILL	Y			
		" " + CRAIGMONT	Y			
		" " + MILLER SOUTH	Y			
		EDNA + ST MICHAELS	Y			
		" " + EAST ST	Y			
		" " + WALNUT	Y			
		" " + JEFF	Y			
		WIND + CENTRAL	Y			
		" " + BROADWAY	Y			
		" " + ELM	Y			
		" " + VINE	Y			
		" " + PLUM	Y			
		" " + MILL	Y			
		" " + MADISON	Y			
		" " + MAIN	Y			
		1ST + PLUM	Y			
		1ST + MILL	Y			
		" " + BROADWAY	Y			
		1ST + JEFF	Y			
		" " + ST MICHAEL	Y			
		EAST + AVLENDACH	Y			
		" " + VAUGHN	Y			

Name:

Hunter Tyler/Jordan

City of Madison

Date:

2-17-22

Culvert/Storm Drain Status

Date	Name	Location	Cleaned (Y/N)	Directions of Flow (N, S, E, W)	Needs Repair	Comments
2-17-22	Hunter/Tyler	main/w 3rd	X	E	NO	
		main/mill	X	S	NO	
		main/mill	X	W	NO	
		main/crasmont	X	S	NO	
		vine/first	X	S	NO	clogged Deeper in hole
		vine/first	X	E	NO	clogged Deeper in hole
		St. Michael/2nd	X	W	NO	
		east/2nd	X	S	NO	
		walnut/2nd	X	S	NO	
		walnut/2nd	X	E	NO	
		Central/2nd	X	S	NO	
		Central/2nd	X	E	NO	
		Second/poplar	X	S	NO	
		second/poplar	X	E	NO	
		second/poplar	X	W	NO	
		Brea Divay/2nd	X	W	NO	
		elm/2nd	X	E	NO	
		elm/2nd	X	S	NO	
		elm/2nd	X	S	NO	
		vine/2nd	X	S	NO	
		vine/2nd	X	SW	NO	
		mill/2nd	X	W	NO	
		mill/2nd	X	E	NO	
		mill/2nd	X	S	NO	
		plum/2nd	X	W	NO	
		plum/2nd	X	S	NO	
		plum/2nd	X	E	NO	